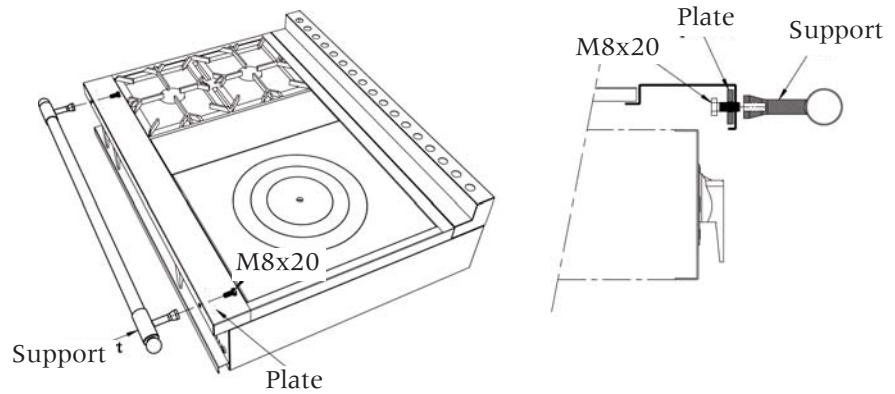
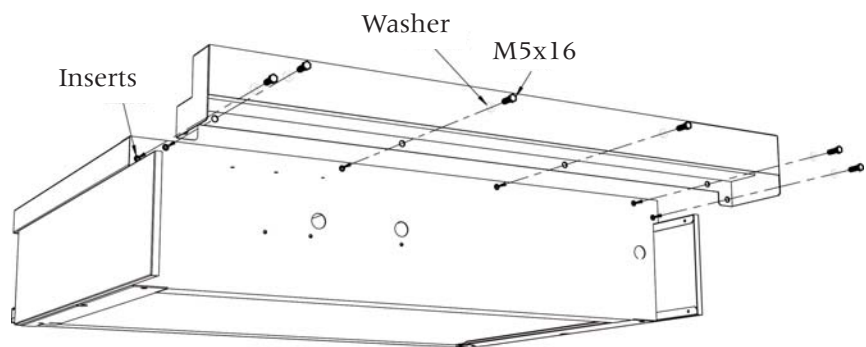


ASSEMBLY INSTRUCTIONS

1. HANDRAIL INSTALLATION

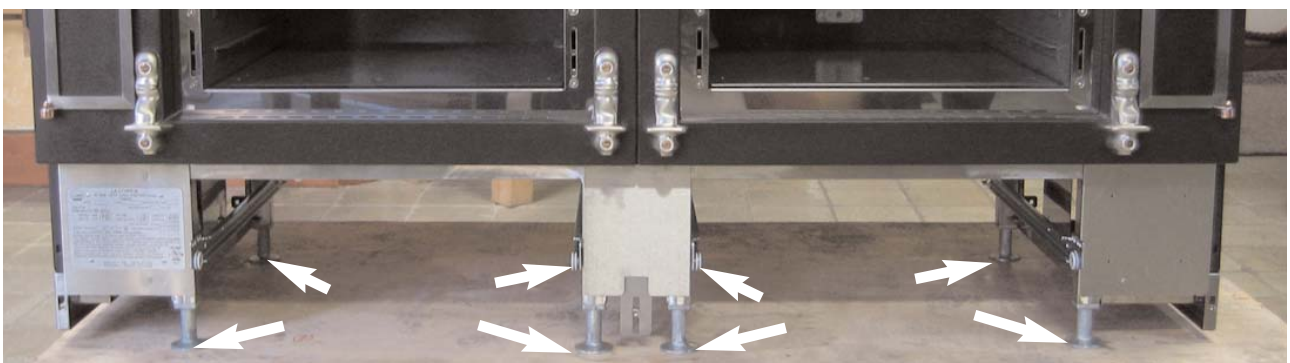


2. RISER / BACKSPLASH INSTALLATION



3. HEIGHT ADJUSTMENT

Château cookers are equipped with adjustable legs so the height of the cooktop can vary from 895 mm (35.24 in) to 915 mm (36.02 in). Remove the drawers and plinthes/toe-kicks, set the cooker in place, screw up the central legs so the cooker rests on the outside legs and adjust the height. Once the cooker is resting at the right height and is level, screw down the central legs to balance the weight.



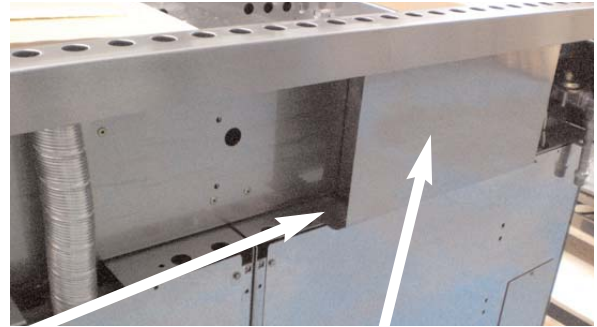
4. GAS CHIMNEY PROTECTION INSTALLATION

Gas chimney protection plate comes separately in the package and needs to be installed above the flue channel behind the gas oven.



Gas oven chimney protection

2 x Screw M5 x 16 mm + washer

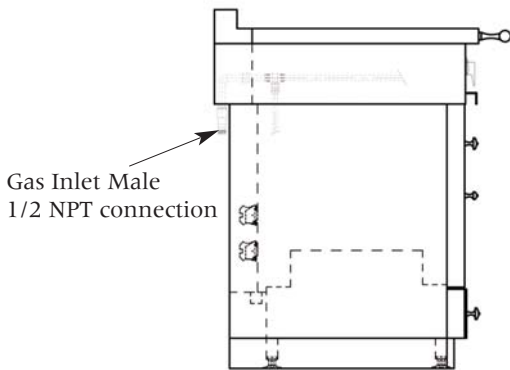


Gas oven chimney protection

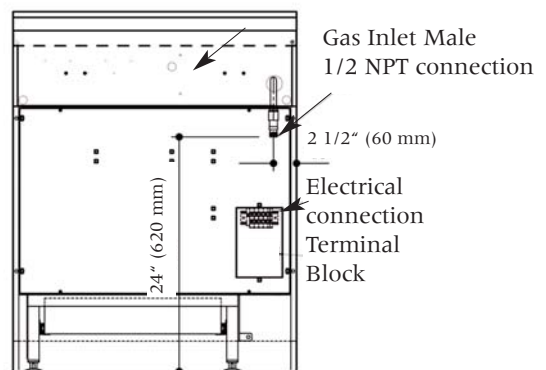
CONNECTIONS

This appliance must be installed by a qualified La Cornue professional in accordance with the current regulations in the country where the appliance is installed.

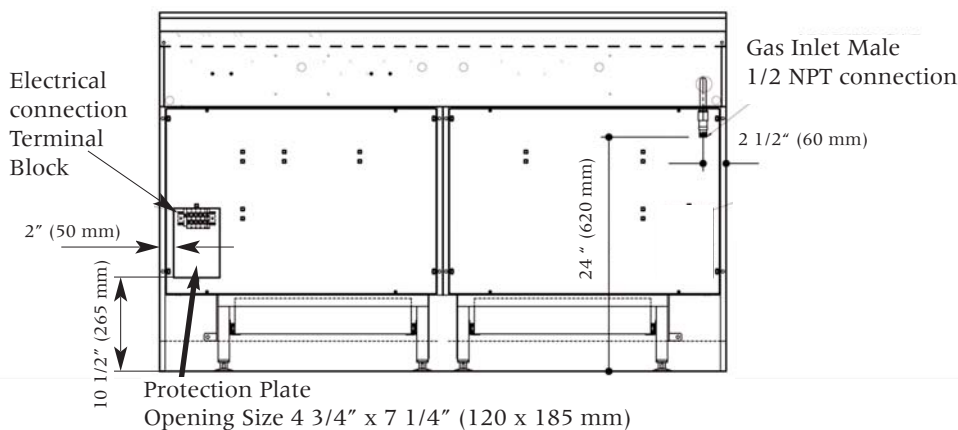
Side view
All Ranges



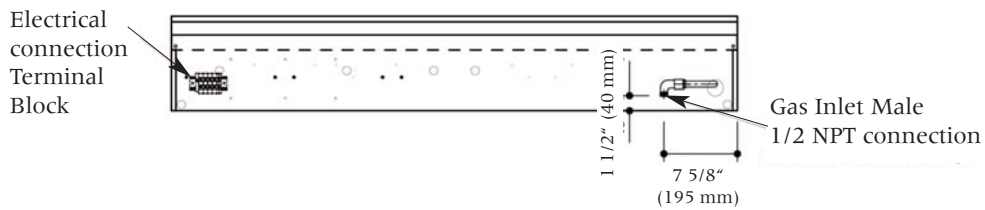
Rear view Ranges:
Château 90 and Château 75



Rear view Ranges:
Grand Palais 180, Château 165, Château 150 and Château 120



Rear view All Cooktops



I. ELECTRICAL CONNECTION

The appliance must be electrically installed and grounded in accordance with local codes or in the absence of such codes with the latest edition of the "National Electrical Code", ANSI/NFPA 70 in the USA, and CSA C22.2 "Canadian Electrical Code" - in Canada.

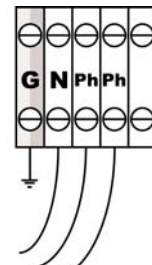
Disconnect all the power supply circuits before accessing the junction boxes.

This appliance must be supplied with 240 Volt and 60 Hz frequency, and connected to an individual, properly grounded branch circuit, protected by a circuit breaker or time-delay fuse, as noted on the rating plate.

Use only a 3-wire or a 4-wire UL-listed power-supply cord rated 120/240 Volts with a straight terminals.

Only a **4 wire cord** is to be used when the appliance is installed where grounding through the neutral conductor is prohibited, such as:

- new branch-circuit installations (1996 NEC),
- mobile homes,
- recreational vehicles or
- in an area where local codes prohibit grounding through the neutral.



240 V a.c. / single phase
(3 wires system)

G-Ground N-Neutral
Ph-Phase

The power of the electric elements for each appliance see page 11 and pages 12 - 22.

Wiring must conform to National Electric Codes.

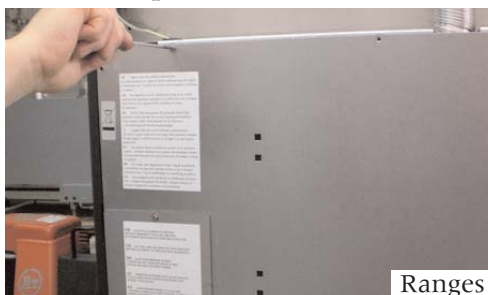
If the electric service provided does not meet the above specifications, have a licensed electrician install an approved outlet.

Because range terminals are not accessible after range is in position, flexible service conduit or cord must be used. The range can then be easily disconnected for servicing etc.

The "La Cornue" appliance is supplied with a connection terminal block accessible by unscrewing the stainless steel protection plate on the backside.

1. Remove the screws and the protection plate on the backside of the ranges.

For the cooktops remove the cover of the main terminal box.

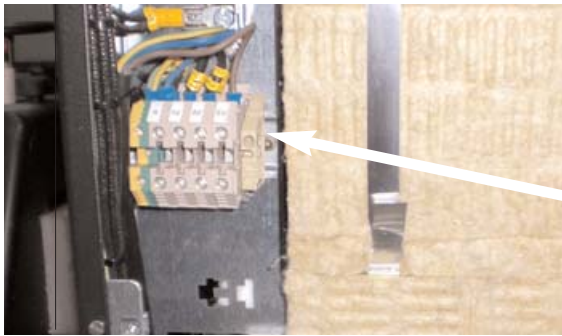


Ranges

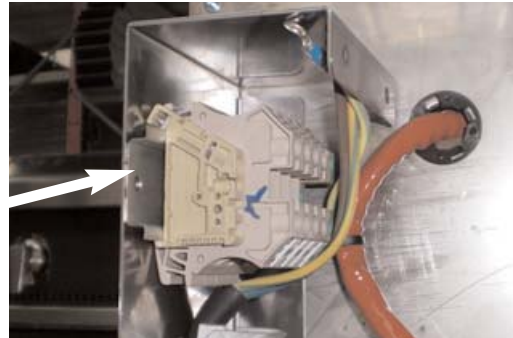


Cooktops

2. Now the terminal block is accessible



Ranges



Cooktops

3. The appliance is shipped with a strain relief device to secure power cord. Insert the power cord through the strain relief and tighten it.



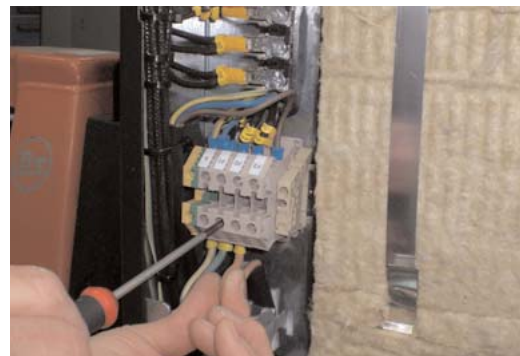
4. Insert the strain relief device into the hole and push it to the left. Tight up the power cord and strain relief device with the screw.



5. Install the power cord: attach the wires to the terminal block as follows:

- neutral (white wire) to N,
- the L1 and L2 (red and black wire) to P1 and P2,
- the ground to T (yellow / green).

NOTE: Make sure the wires are completely inserted into the terminals and secure connections are made.



6. Re-install the protection plate for the range or the cover for the cooktop.

7. Make sure that everything is properly secured.

REMINDER: connections to main power supply preferably suppose to be hardwired into the wall Junction Box compare using the Plugs and Outlet.

Fix the cable well below the hot air outlets, at the rear of the oven, never in front of them.

2. GAS CONNECTION

The installation of your La Cornue appliance must conform with local codes or, in the absence of local codes, in the USA with the "National Fuel Gas Code", ANSI Z223.1, latest edition, and, in Canada, with CAN/CGA - B149.1, and CAN CGA - B149.2, "Installation Code for Gas Burning Appliances".

All La Cornue ranges and cooktops are fully assembled and equipped for use with the type of gas shown on the rating plate of the appliance.

If no special instructions were mentioned upon ordering, the stove is fitted with orifices for natural gas.

Prior to installation, ensure that the local distribution conditions (nature of the gas and gas pressure) and the adjustment of the appliance are compatible.

The range is designed to operate at a manifold pressure of 5" of Water Column on natural gas, or a manifold pressure of 11" of Water Column on LP gas (Propane).

If the range is to be used on LP gas, a qualified LP installer must convert it. We recommend that the range be converted before installation.

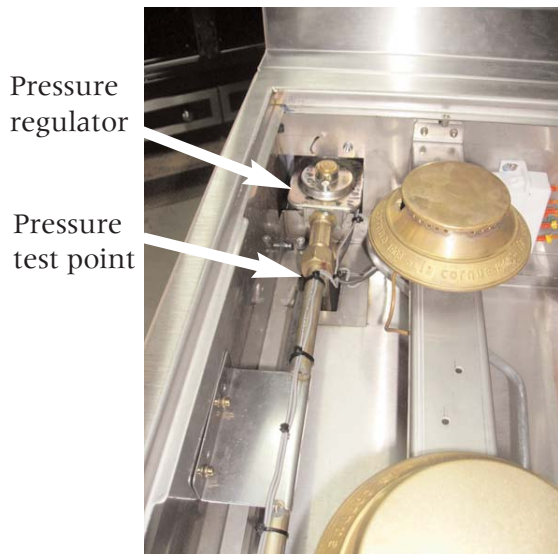
For proper operation, the pressure of natural gas supplied to the regulator must be between 6" and 10" of water column.

For LP gas, the pressure supplied must be between 12" and 13" of water column.

When checking for proper operation of the regulator, the inlet pressure must be at least 1" greater than the operating (manifold) pressure as given above.

The pressure regulator located at the inlet of the range manifold must remain in the supply line regardless of whether natural or LP gas is being used.

A flexible metal appliance connector used to connect the range to the gas supply line should have an I.D. of 1/2" and be 5 feet in length for ease of installation.



The gas regulator on the appliance is set at the factory for pressures given by regulations.

For the La Cornue ranges and hobs the regulator and the pressure tap can be found on the hob's manifold located by the 2 left gas burners

Connect the Range to the Gas Supply

Shut off the main gas supply valve before disconnecting the old range and leave it off until the new hookup has been completed. Don't forget to relight the pilot on other gas appliances when you turn the gas back on.

Because hard piping restricts movement of the range, the use of a CSA International certified flexible metal appliance connector is recommended unless local codes require a hard piped connection.

