

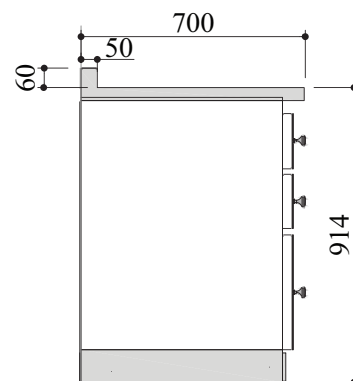
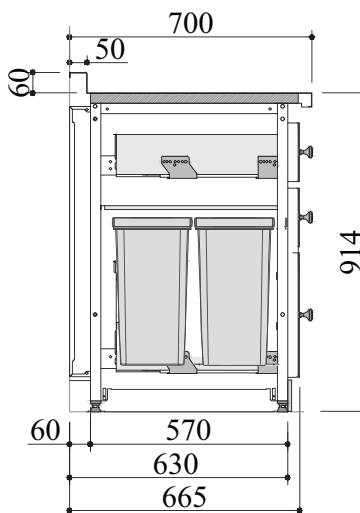
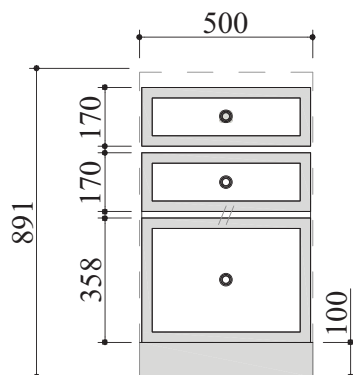
MEUBLE POUBELLE (WASTE BIN) 500 - BOTTOM: TIN



All cabinetry comes open framed; countertops are not included. Stainless Steel countertops are available to quote. Unfinished Stainless Steel side and back panels are available at no extra charge. Finished enamel or finished Stainless Steel panels are available for an additional cost. All drawers come with a standard rubber drawer liner. False drawers (decorative trim applied to exterior of non-functioning cabinet panel) can be made into working drawers for an additional cost. Additional customization available to quote.

*Note: All Château Drawer Cabinets may be used as a sink base; when used in this application, please note that the large top drawer or top two small drawers will not be functional. A shelf may be possible dependent on the sink specified. **Porte Cabinets:** Select cabinets from the Porte series are open bottom to allow for compatibility with dishwashers, sinks, varios or other custom applications. Any Porte cabinet can be ordered with a Stainless Steel bottom, back or side. [These include PTD, POT, PT4, POM, POP] All Château Cabinetry height can be adjusted .5" plus or minus*

CABINET SCHEMATICS



SPECIFICATIONS

MEUBLE POUBELLE (WASTE BIN) 500 - BOTTOM: TIN

500 W x 665 D x 891 H (mm)
19.7 W x 26.2 D x 35.0 H (inches)
1 Small Top Drawer
1 Large Bottom Waste Bin
Rubber liner provided in top drawer
Two 28 L Waste Bins sold separately (listed to the right)

WASTE BIN 500: BIN & TIN \$800

